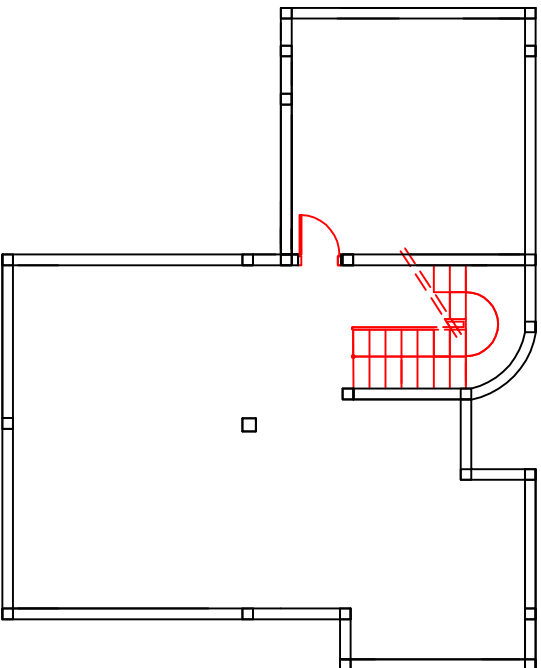
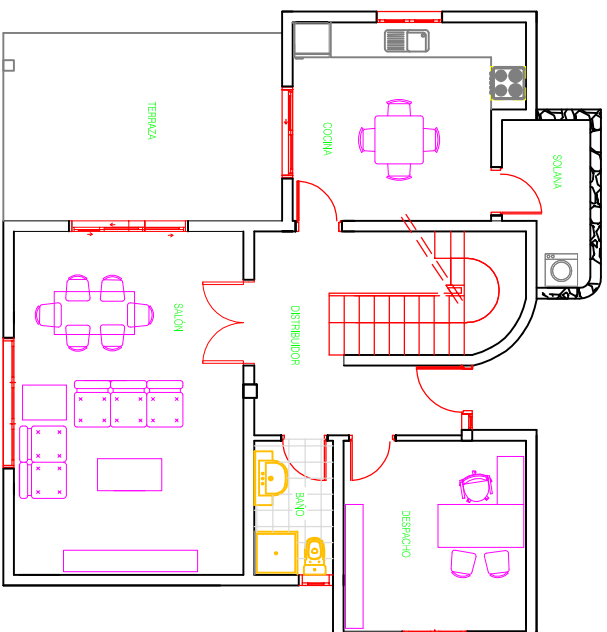


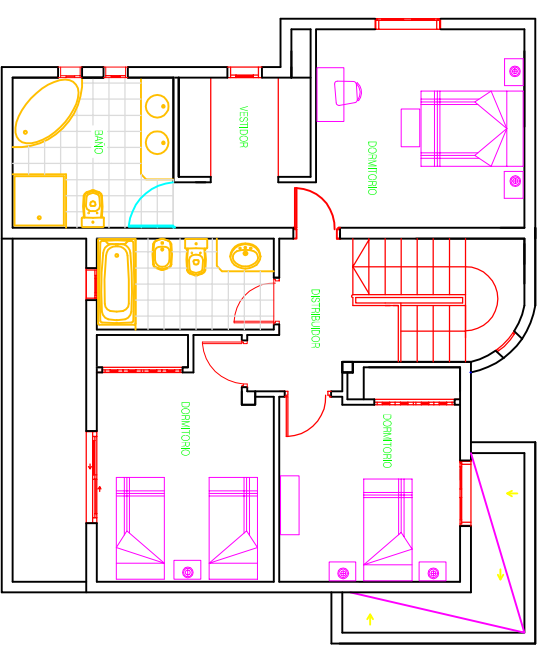
TIPO 2 (16.00.2C)



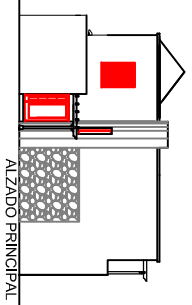
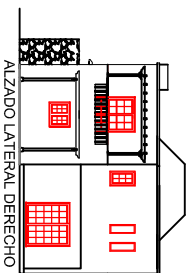
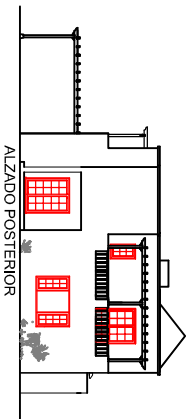
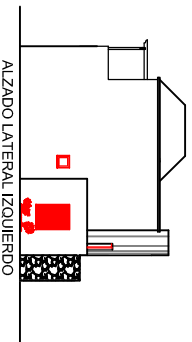
PLANTA BAJA



PLANTA ALTA



T2- 16.00.2C



PROYECTO EJECUCION

118 VIVIENDAS UNIFAMILIARES

PROYECTOR

HORMICONSA S.L.

CONSTRUCTOR

HORMICONSA CANARIAS S.A.

SITUACION

PARCELA 202, COSTA TEGUISE
T.M. TEGUISE, LANZAROTE

PLANO

DISTRIBUCION VIVIENDA TIPO 2 (16.00.2C)

ARQUITECTO

ANABEL DIAZ DEL VALLE